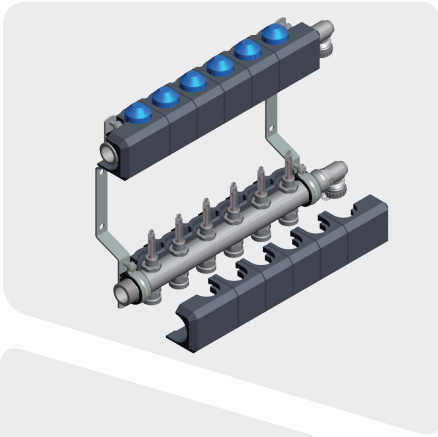


HEATING CIRCUIT MANIFOLD FOR RADIANT PANEL HEATING AND COOLING SYSTEMS

Systematic heating and cooling





Main features

- Sizes 2-12, available directly from stock
- Closable flow meter with very low pressure loss
- The 0-4 l/min flow rate indicator helps to provide optimum adjustment and monitoring for the volumetric flow
- 1" connection with flat sealing on both sides for manifold accessories and control unit
- Function- and pressure-tested
- Regulating and shut-off valves with M30x1.5 adapter (closing point: 11.8 mm)
- Manifolds comply with BS EN 1264

Extract from DIN EN 1264-4: 4.1.2.4.3 Stop valves and balancing devices

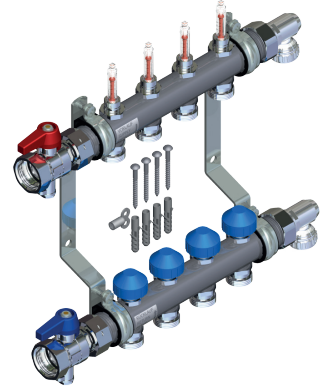
Each circuit shall have two stop valves and a balancing device.
The shut-off and balancing functions shall be independent.

WATTS Industries Deutschland is a leading manufacturer of products and system components for radiant panel heating and cooling systems, heat pumps, boiler connection technology, solar heating systems and solid fuel systems.

We adapt our components to current market requirements on a permanent basis. Tailor-made solutions form the core of our daily business operations. Climate protection measures, environmental specifications and increasing prices pose challenges to which we have provided a timely response with the development of new technologies. We have been a market leader for several decades with our innovative products for this dynamic growth market.

Stainless steel heating circuit manifold HKV2013AF+ 0-4 VA

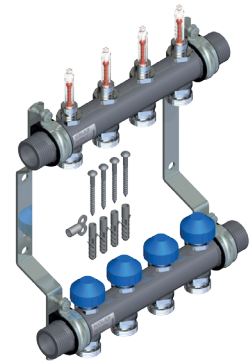
Stainless steel 1" M round pipe.
Closable flow meter with 0-4 l/min graduated disc.
Distance between outflow centres: 50 mm.
¾" Eurocone connections for heating circuits.
Supply line at top. Ready-mounted on wall bracket.
Included in the scope of supply:
KFE90 end set and KH-SET WMZ ball valve set with M10x1 sensor connection.



Model		Item no.	PU
HKV2013AF+ 0-4 VA02	2 heating circuits	10070249	1 unit
HKV2013AF+ 0-4 VA03	3 heating circuits	10070250	1 unit
HKV2013AF+ 0-4 VA04	4 heating circuits	10070251	1 unit
HKV2013AF+ 0-4 VA05	5 heating circuits	10070252	1 unit
HKV2013AF+ 0-4 VA06	6 heating circuits	10070253	1 unit
HKV2013AF+ 0-4 VA07	7 heating circuits	10070254	1 unit
HKV2013AF+ 0-4 VA08	8 heating circuits	10070255	1 unit
HKV2013AF+ 0-4 VA09	9 heating circuits	10070256	1 unit
HKV2013AF+ 0-4 VA10	10 heating circuits	10070257	1 unit
HKV2013AF+ 0-4 VA11	11 heating circuits	10070258	1 unit
HKV2013AF+ 0-4 VA12	12 heating circuits	10070259	1 unit

Stainless steel heating circuit manifold HKV2013AF 0-4 VA

Stainless steel 1" M round pipe.
Closable flow meter with 0-4 l/min graduated disc.
Distance between outflow centres: 50 mm.
¾" Eurocone connections for heating circuits.
Supply line at top. Ready-mounted on wall bracket.



Model		Item no.	PU
HKV2013AF 0-4 VA02	2 heating circuits	10070000	1 unit
HKV2013AF 0-4 VA03	3 heating circuits	10070001	1 unit
HKV2013AF 0-4 VA04	4 heating circuits	10070002	1 unit
HKV2013AF 0-4 VA05	5 heating circuits	10070003	1 unit
HKV2013AF 0-4 VA06	6 heating circuits	10070004	1 unit
HKV2013AF 0-4 VA07	7 heating circuits	10070005	1 unit
HKV2013AF 0-4 VA08	8 heating circuits	10070006	1 unit
HKV2013AF 0-4 VA09	9 heating circuits	10070007	1 unit
HKV2013AF 0-4 VA10	10 heating circuits	10070008	1 unit
HKV2013AF 0-4 VA11	11 heating circuits	10070009	1 unit
HKV2013AF 0-4 VA12	12 heating circuits	10070010	1 unit

Ball valve set with M10×1 sensor connection

G 1" ball valve set with M10×1 sensor connection for short, direct immersion sensors for heat meters as per EN 1434. Nickel-plated brass body with union nut and gaskets.

Model	Item no.	
KH-SET WMZ	10029160	1" UN × ¼" F, M10×1, nickel-plated
KH-SET WMZ	10028597	1" UN × 1" F, M10×1, nickel-plated



G1" ball valve set

Nickel-plated brass body with union nut and gaskets.

Model	Item no.	
KH-SET HKV	10022872	1" UN × ¼" F, nickel-plated
KH-SET HKV	10022871	1" UN × 1" F, nickel-plated



Ball valve with thermometer

Nickel-plated brass body with union nut and gaskets. NG 34 thermometer.

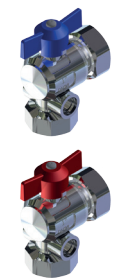
Model	Item no.	
KHT-SET	10022873	1" UN × 1" F, nickel-plated



Angled ball valve set

G 1" ball valve set with angled shape. Nickel-plated brass body with union nut and gaskets. Connector sockets on both sides for optional NG34 thermometer.

Model	Item no.	
KHT-SET ECK	10050657	1" UN × 1" F, nickel-plated
F+R810 TBC	10018003	0-50 °C, Ø 34 mm
F+R810 TBC	10018005	0-60 °C, Ø 34 mm
F+R810 TBC	10018007	0-80 °C, Ø 34 mm
F+R810 TBC	10018004	32-212 °F/0-100 °C, Ø 34 mm



ES-Set KFE90 1" end set

End set for flushing, filling and draining. Nickel-plated brass body with union nut and gaskets.

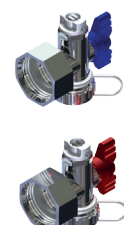
Model	Item no.	
ES-SET KFE90 1" F N	10028149	1" UN, nickel-plated



Quattro 1" end set

Ball valve with handle for easy filling, flushing and draining. Nickel-plated brass body with union nut and gaskets.

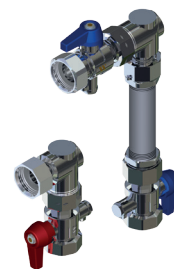
Model	Item no.	
ES-SET Q 1" Ni	10022835	Manual bleed valve, 1" UN, nickel-plated



Heat meter installation set, vertical

For G ¾"-110 mm and G 1"-130 mm heat meters. G 1" ball valve with connection. M10x1 (KH-WMZ) for short, direct immersion sensors as per EN 1434. Flat-sealing installation on right or left side of manifold with 1" M. Nickel plated.

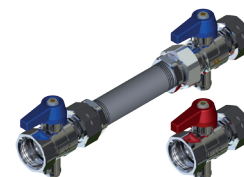
Model	Item no.	
WMZ2029-V2	10028598	Vertical, 2x KH-WMZ



Heat meter installation set, horizontal

For G ¾"-110 mm and G 1"-130 mm heat meters. G 1" ball valve with M10x1 (KH-WMZ) connection for short, direct immersion sensors as per EN 1434. Flat-sealing installation on right or left side of manifold with 1" M. Nickel plated.

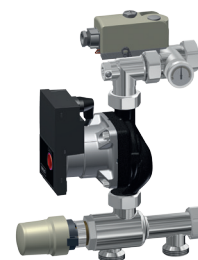
Model	Item no.	
WMZ2029-H2	10028599	Horizontal, 2x KH-WMZ



ISOMIX-F ready-to-mount control unit

Ready-to-mount, compact control unit to control supply temperature in radiant panel heating systems up to 14 kW heat output requirement. supply temperature adjustment range with 20–50 °C limit. Pump and temperature limiter are wired at the factory. Can be mounted on the right or left side of the manifold. Suitable for all Watts 1" M heating circuit manifolds. Nickel plated.

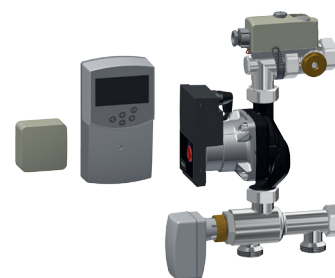
Model	Item no.	
ISOMIX-F YP15/6 WTC-IS Ni	10070291	Wilo Yonos Para 15/6, nickel-plated



ISOMIX-HC ready-to-mount control unit

Ready-to-mount, compact, weather-compensated control unit for radiant panel heating/cooling systems. Pump, 3-way mixing valve with actuator, CC-HC climate controller with supply and return temperature sensors, wired at the factory. Outdoor temperature sensor. Can be mounted on the right or left side of the manifold. Suitable for all Watts 1" M heating circuit manifolds. Nickel plated.

Model	Item no.	
ISOMIX-HC YP15/6 WTC-Ni	10070435	Wilo Yonos Para 15/6, nickel-plated



Manifold insulation

EPP insulating cover with snap latch to insulate manifold with 1" male thread, suitable for manifolds with 6 outflows. The scope of supply includes an insulation section for supply and return lines, including a blade to adapt to sizes.

Model	Item no.	
HKV20xx-50-1"	10023474	2 units for supply and return lines

